



boston:college

# SWITCH UP

BRILLIANT TODAY, BETTER TOMORROW

**A Level Course Guide 2024/2025**





# WELCOME



Thank you for considering Boston College as your progression route after GCSEs. Our A Level courses will not only fully prepare you to undertake further study at university, but are also becoming increasingly desirable by employers who are looking for keen apprentices to join their schemes and fund their studies at Degree level.

Our A Level courses are linear which means you will study three subjects over two years and sit your exams at the end of this period. This allows you time to grow academically and on a personal level. We instil professional standards and values in all our learners, so you understand the responsibility involved in entering these well-qualified fields and remain motivated and committed to making a difference in society.

We understand the worries young people face regarding leaving home and getting into debt, which is why we also offer several degrees here at College that allow you to stay at home and obtain your degree at a lower cost. For those learners who are keen to spread their wings, **we can boast that all our learners who have applied for university places over the last seven years have been successful, including** at prestigious Russell Group Universities and opportunities to apply to Oxford and Cambridge. At the start of your second year, we will guide you through and complete the UCAS process with you and ensure you remain on target to achieve the grades required by your chosen university.

I have taught A Levels for over a decade at the College myself, so have had the privilege of watching learners excel academically, but as importantly, watched them grow in confidence and make lifelong friends. I believe this is because **we have fostered a university environment, so are the perfect stepping stone to Higher Education and the working world.**

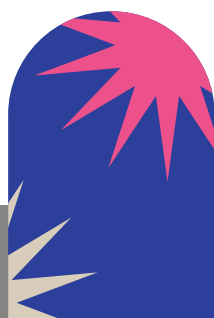
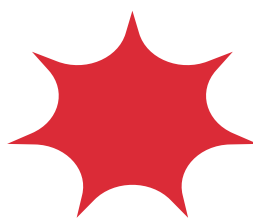
**We have a strong, energetic team who are fully dedicated to ensuring you have an amazing academic and personal journey with us.**

We look forward to being part of this stage of your life.

## Gerri Brazil

Gerri Brazil

Senior Learning Lead: A Levels and Access to Higher Education



# THE LEARNER EXPERIENCE

Studying A Levels at Boston College is more than just attending lessons. Over the two years of study, you can expect to get involved in a wide variety of extra-curricular activities, with previous educational visits including Warner Bros. Studios, The Imperial War Museum North, The Old Bailey, Westminster and University Open Days. You will have the chance to get involved in the debate club, film club, sports clubs, National Maths Challenge and enterprise projects. Other benefits include joining the National Union of Students, discounted gym memberships, on-site hair and beauty salon, on-site restaurants and coffee shop.

## LEARNER SUPPORT

You will find a wide range of support services available at Boston College to give you the best advice and guidance throughout your course, including Learner Support Officers, an Inclusive Learning Team, Careers Advisers, a Bursary Administrator, an Information Officer, Counsellors, a Safeguarding Team and a Brilliance Coordinator.

## CAREERS ADVICE AND GUIDANCE

We provide a FREE, impartial, quality careers service to help you on your next steps. Our Careers, Education, Information, Advice and Guidance (CEIAG) trained advisers are available by face-to-face appointment or telephone advice. Call our Information Line on **01205 313218** or email **careers@boston.ac.uk** to make an appointment.

The Matrix Quality Standard recognises the high-quality careers advice provided by our Careers Team.



# BIOLOGY

The principles of biology underpin your very existence. A Level Biology takes you on a journey from the genetic code locked away within your cells, and the chemical reactions that keep you alive, to the behaviours of entire species and ecosystems.

## Course content

Over the course of two years, you will study a wide range of topics including Biological Molecules, Organisms and their Environment, Genetic Information, Variation and Relationships between Organisms, Energy Transfers in and between Organisms, Genetics, Populations, Evolution and Ecosystems and The Control of Gene Expression.

You will also conduct 12 exciting practical sessions in our specialised labs.

## Assessments

You will sit three examinations at the end of your second year covering various aspects of the learning you will have undertaken over the two years.



### Which career/ vocational areas can this subject lead to?

Coupled with other appropriate A Levels, an A Level in Biology can lead to a vast range of careers, including but not limited to Biomedical Science, Nursing and Midwifery, Paramedic Science, Physiotherapy, Public Health, Ecology, Pharmaceutical Science, Optometry, Clinical Psychology and Sports Science.

COURSE	DURATION	LOCATION
A Level Biology	2 Years	Boston

APPLY NOW AT  
[www.boston.ac.uk](http://www.boston.ac.uk)



# BUSINESS

Without a strong business sector, most people would not have a job! Understanding how business works, and the role it has in shaping our society, will help to equip you with the skills you need for the future.

## Course content

In your first year you will examine the role businesses have in society, how they are structured and run, and how management makes decisions relating to the core business functions of marketing, operations, finance and human resources.

During your second year, the focus will shift to business strategy and how modern businesses interact with wider society, including issues such as the competitive environment, globalisation, emerging technologies and the challenges of economic change.

In both years we will use up-to-date examples from the business world to show how theory can be used to understand the choices companies are making and the constraints they are working under.

## Assessments

You will sit three examinations at the end of your second year, which draw on topics studied across all the units over both years. There will be a mixture of factual questions and case studies to analyse. Each paper will last 2 hours.

**Paper One:** four compulsory sections, with multiple-choice and short-answer questions and two essays.

**Paper Two:** three compulsory data response questions, each of which are made up of three or four individual questions; one of these data-response questions will have mainly numerical or graphical data.

**Paper Three:** a case study and approximately six compulsory questions.

COURSE	DURATION	LOCATION
A Level Business	2 Years	Boston



### Which career/ vocational areas can this subject lead to?

Whether you would like to study Business, Finance or Management at university or with Boston College, move directly to employment or even start your own business, A Level Business provides an excellent foundation. You will learn skills such as analysing complex situations and recommending practical solutions which are transferable across a broad range of subjects and careers. Whatever you choose to do in the future, you will find the units you study on this course will help.



# ENGLISH LANGUAGE



The English language is all around us – in adverts, publications, subtitles and web pages. This course will explore the English language from different perspectives.

.....

### Course content

Over your two years studying English Language, you will cover linguistic frameworks (grammar, lexis, phonology, graphology) and how to use them in text analysis. You will also study how we use language to create different identities and how language varies according to region, gender, social group and occupation.

As the course progresses you will go on to study how children learn language and the theories that explain language development. You will also study the history of the English language, looking at how it has developed from Anglo-Saxon (early English) to modern English.

Your study of language variation will expand to cover international varieties of English and how ethnicity affects language use.

.....

### Assessments

You will sit two examinations at the end of your second year which draw on topics studied across all the units over both years. Each paper will last 2 hours.

As well as the written exams, you will complete two pieces of written coursework which consist of an original piece of writing and a language investigation in an area that interests you.

.....

COURSE	DURATION	LOCATION
A Level English Language	2 Years	Boston

.....

### Which career/ vocational areas can this subject lead to?

An A Level in English Language can lead to a wide range of careers as it gives you a good grounding in grammar and writing for specific audiences. This subject can lead to careers in Journalism, Teaching, Law, and the Media.

# ENGLISH LITERATURE



A Level English Literature is for those who enjoy reading and who wish to explore a wider range of texts and literary genres. There is also the opportunity for you to make your own choice of texts for coursework in the second year.

.....

### Course content

Over two years you will study a variety of texts and poetry. You will begin your studies by focusing on four texts – two plays, a novel and poetry – under the title ‘Aspects of Comedy’ before progressing onto novels and poetry in the crime writing genre. You will also learn to analyse unseen extracts from crime writing.

.....

### Assessments

You will sit three examinations at the end of your second year that cover all the topics and aspects you will have studied during the course.

**Paper One:** Aspects of Comedy; Paper 1B.

**Paper Two:** Elements of Crime Writing; Paper 2A.

**Paper Three/Coursework (non-exam assessment):** Two essays – one on a prose text and one on poetry, examined in relation to the AQA Critical Anthology.

.....

COURSE	DURATION	LOCATION
A Level English Literature	2 Years	Boston

.....

### Which career/ vocational areas can this subject lead to?

An A Level in English Literature can lead to a wide range of careers such as Journalism, Creative Writing, Publishing, Teaching and Broadcasting.



APPLY NOW AT  
[www.boston.ac.uk](http://www.boston.ac.uk)

# FILM STUDIES



Film Studies is about deepening your understanding of film as a visual medium, art form and cultural production. This course explores the language of film, film industries and movements from around the world and allows you to develop your own creative ideas.

## Course content

You will begin your learning by studying Hollywood 1930-1990, comparing Casablanca (Michael Curtiz, 1942) with Blade Runner (Ridley Scott, 1982), moving on to a contemporary American independent film, Winter's Bone (Debra Granik, 2010), British film, comparing Trainspotting (Danny Boyle, 1996) and This is England (Shane Meadows, 2006), and one non-English language European film, Pan's Labyrinth (Guillermo Del Toro, 2006).

After this you will progress onto mainstream American film since 2005, focussing on Inception (Christopher Nolan, 2010), a global film from Brazil, City of God (Lund and Meirelles, 2002), documentary film, including Amy (Asif Kapadia, 2015), silent film, including Sunrise (FW Murano, 1927) and experimental film, including Pulp Fiction (Quentin Tarantino, 1994).

## Assessments

You will sit two examinations at the end of your second year which will cover various aspects of the learning you will have undertaken over the two years.

**Paper One:** This paper covers American and British film. You will examine films from American and British film history, comparing old and new movies. Written examination: 2 hours 30 minutes (35% of qualification).

**Paper Two:** This paper covers Varieties of Film. You will look at different types of film, such as documentaries and films from around the world. Written examination: 2 hours 30 minutes (35% of qualification).

**Coursework (non-exam assessment):** The production element of the course changes over the two years. In the first year you will produce a screenplay extract, storyboard and reflective evaluation. In year two you will produce a short film script, storyboard and reflective evaluation.

COURSE	DURATION	LOCATION
A Level Film Studies	2 Years	Boston

## Which career/ vocational areas can this subject lead to?

An A Level in Film Studies can lead to a wide range of careers such as Film Director, Film Producer, Editor, Location Manager, Researcher, and Cinematographer.



# HISTORY

As a History learner, you have to build up a picture from the available evidence, argue your case well and use evidence to draw conclusions and make judgements.

## Course content

You will begin your learning by studying two topics, Challenge and Transformation in Britain, 1851-1964 and The Cold War, 1945-1991. You will also cover the first part of Victorian and Edwardian Britain, c1851-1914, and To the Brink of Nuclear War: International relations, c1945-1963.

You will then continue your learning by focusing on The World Wars and their legacies; Britain, 1914-1964 and The Cold War, 1945-1991: From Détente to the End of the Cold War, c1963-1991.

## Assessments

You will sit two examinations at the end of your second year covering various aspects of the learning you will have undertaken.

**Paper One:** Challenge and Transformation in Britain, 1851-1964. This paper is split in to three questions: Section A – one compulsory question linked to sources (30 marks) and Section B – two essay questions from a choice of three (25 marks each). You will have 2 hours 30 minutes to complete the paper and it is worth 40% of your qualification.

**Paper Two:** The Cold War, 1945-1991. This paper is the same format as Paper One, you will have 2 hours 30 minutes to complete it and it is worth 40% of your total qualification.

**Coursework (non-exam assessment):** This is your opportunity to undertake independent research and develop your extended essay writing skills, in preparation for university. You will produce a 3500-4500 word essay to answer a question on The Witch Hunts in Sixteenth and Seventeenth Century Europe. The essay is worth 20% of your total qualification.

COURSE	DURATION	LOCATION
A Level History	2 Years	Boston

## Which career/ vocational areas can this subject lead to?

The skills you will learn on the A Level History course are highly desirable in many different careers. As a History learner you are not just limited to history-related jobs; many careers require skills from studying history, such as Law, Business, Finance, Tourism, Politics, Journalism and Research.



# LAW

A robust legal system is the foundation of a fair society. If you feel strongly about concepts like justice and equality, then this course could be very rewarding for you.

## Course content

During the two years of A Level Law, you will study the UK legal system, criminal law, law making and the Law of Tort before progressing to contract law and human rights law later in the course.

## Assessments

You will sit three written examinations at the end of your second year covering various aspects of the learning you will have undertaken. Each paper will represent 33.3% of the qualification.

**Paper One:** The Nature of Law and the English Legal System and Criminal Law.

**Paper Two:** The Nature of Law and the English Legal System and Tort Law.

**Paper Three:** Contract Law or Human Rights Law.

COURSE	DURATION	LOCATION
A Level Law	2 Years	Boston



### Which career/ vocational areas can this subject lead to?

You might see yourself as a Barrister, a Solicitor, a Legal Executive or a Legal Secretary. Whichever aspect of law you are interested in, A Level Law gives you a strong foundation in the subject.

APPLY NOW AT  
[www.boston.ac.uk](http://www.boston.ac.uk)



# MATHS

A Level Maths is designed for those who wish to extend the maths they learnt at school and continue to progress on to Higher Education at university or at Boston College.

## Course content

You will begin your learning by studying three core units: Pure Maths 1 (algebraic methods, coordinate geometry, trigonometry, binomial expansion, differentiation, integration, vectors, exponential and logarithms), Statistics (data, correlation, probability, statistical distribution and hypothesis testing) and Mechanics (kinematics, constant and variable acceleration, forces and motions).

You will then continue your learning by studying Pure Maths 1 and 2 (proof, algebra and functions, coordinate geometry, sequences and series, trigonometry, differentiation, integration, exponentials and logarithms, numerical methods, vectors), Statistics (statistical sampling, data presentation and interpretation, probability, statistical distributions, statistical hypothesis testing) and Mechanics (quantities and units in mechanics, kinematics, forces and Newton's Laws and moments).

## Assessments

You will sit three examinations at the end of your second year which cover all of the units and topics that you have studied: Pure Maths, Statistics and Mechanics.

COURSE	DURATION	LOCATION
A Level Maths	2 Years	Boston



### Which career/ vocational areas can this subject lead to?

A variety of subjects make use of maths, so if you are thinking of studying any of the following subjects further, maths is a great qualification to have alongside. A Level Maths can support Biology, Chemistry, Business Studies, Economics, Computing, Physics, Engineering, Statistics, Education Studies, Sports, Finance, Environmental Studies and Psychology in particular. Many of the Russell Group Universities, as well as Oxford and Cambridge, consider a good grade at A Level Maths to be a desirable criterion for admission to a lot of subjects including Medicine and Economics.

# MEDIA STUDIES



The media plays an increasingly important role in our lives, shaping our identities, political views and lifestyles. Media Studies explores the role the media has in our lives and how different media products are designed and consumed.

### Course content

During the course you will study Media Language and Representation and Media Forms and Products. Media forms studied include advertising and marketing, newspapers, music video, film marketing, video games, TV crime drama, magazines and online media. These will be supported by relevant theories, such as postmodernism, genre theory, cultivation theory, fandom, gender performativity and end of audience theory, amongst others.

### Assessments

You will sit two examinations at the end of your second year, which will cover the units and topics that you have studied throughout the course.

**Paper One:** This paper covers Media Products, Industries and Audiences. The paper has two sections: Section A – Analysing Media Language and Representation and Section B – Understanding Media Industries and Audiences. Written examination: 2 hours 15 minutes, 35% of qualification.

**Paper Two:** This paper covers Media Forms and Products. The paper has three sections: Section A – TV in the Global Age, Section B – Magazines: Mainstream and Alternative Media and Section C – Media in the Digital Age. Written examination: 2 hours 30 minutes, 35% of qualification.

**Coursework (non-exam assessment):** You will produce coursework consisting of an individual cross-media production based on two media forms in response to a choice of briefs. In the past this has included designing media materials in both print and online forms. 30% of qualification.

### Which career/ vocational areas can this subject lead to?

An A Level in Media Studies can lead to a wide range of careers such as Journalism, Media Buying, Media Planner, Researcher, Public Relations Officer, Social Media Manager, TV Producer and Web Content Manager.

COURSE	DURATION	LOCATION
A Level Media Studies	2 Years	Boston



# PSYCHOLOGY

A Level Psychology aims to give you a broad understanding as to why we think and behave in the way we do. Today, psychology is seen as a science and you will be undertaking a scientific study of the brain and behaviour.

### Course content

You will learn to demonstrate the ability to analyse and evaluate psychological theories and findings and how to apply this knowledge.

The course involves you acquiring knowledge and understanding of psychological theories. This will be achieved by group discussions/debates, practical experiments and written work. You will learn the 'language' of 'how science works', which is invaluable in psychology where evidence is paramount if a theory is to be taken seriously.

A Level Psychology is a two-year course, during which you will study Cognitive psychology (memory), Developmental psychology (early social development), Social influence, Approaches in psychology, research methods and psychopathology (abnormality) before progressing to study Biopsychology, Schizophrenia, Research methods, Relationships, issues and debates, and you can choose your own topic between addiction, aggression or forensic psychology.

### Assessments

You will sit three examinations at the end of your second year, all 2 hours in duration, which will test your knowledge of all of the topics you have covered throughout the course.

### Which career/ vocational areas can this subject lead to?

Psychology A Level and further degree study can lead to careers including Psychologist, Advertising Executive, Case Manager, Child Care Worker, Laboratory Assistant, Market Researcher, Psychiatric Technician, Probation and Parole Officer, Teaching and Report Writer.

COURSE	DURATION	LOCATION
A Level Psychology	2 Years	Boston



APPLY NOW AT  
[www.boston.ac.uk](http://www.boston.ac.uk)



# SOCIOLOGY

Sociology is a subject which lends itself to healthy debate and discussion and you are encouraged to use your own life experiences as a starting point to understand our own society and the effects of others upon us.

## Course content

Over the two years of the course, you will cover a wide range of topics such as families and households, education and sociological methods, as well as media, crime and deviance and theory and methods.

The course involves you actively participating in the learning process to gain understanding and insight into contemporary issues.

The subject content has been arranged so that you must study a core of theory and methods, plus a selection of substantive topics.

## Assessments

This is an intensive course, and you must recognise that a lot of reading and essay writing needs to be done at home in preparation for two predominantly essay-based papers. Each paper involves you presenting and assessing a range of sociology theories.

You will sit three examinations at the end of your second year covering various aspects of the learning you will have undertaken over the duration of the course. Each paper will last 2 hours.



### Which career/ vocational areas can this subject lead to?

Sociology A Level and further degree study can lead to a career in Police and Probation Services, Local and Central Government, Social and Market Research, Charitable, Counselling and Voluntary organisations, Public Relations, Journalism and Communications, Media and Marketing, Law and the Criminal Justice System, Teaching and Education.

COURSE	DURATION	LOCATION
A Level Sociology	2 Years	Boston

# HIGHER EDUCATION

## APPLYING FOR UNIVERSITY

During tutorials in your second year of study, you will be given the opportunity to apply for university through the UCAS process. Our tutors have many years' experience in helping learners get through the application process. As part of preparing learners for Higher Education and employment, we run an Enterprise Project which helps develop teamwork and presentation skills.

### ACHIEVE YOUR DEGREE AT BOSTON COLLEGE

Through our academic partnership with University of Derby, and additional Pearson HNCs and HNDs, Boston College is pleased to provide a range of excellent, high-quality courses up to degree and PGCE level locally.

In partnership with



University Level courses are available in the following course areas:

- ANIMAL STUDIES
- BUSINESS
- CREATIVE ARTS
- DIGITAL TECHNOLOGIES
- EARLY YEARS AND SCHOOLS
- ENGINEERING
- HEALTH AND SOCIAL CARE
- SPORT, FITNESS AND WELLBEING
- TEACHING
- TRAVEL AND TOURISM
- UNIFORMED PUBLIC SERVICES



SCAN ME TO DISCOVER MORE!





# TIMETABLE

We are excited to present a comprehensive range of subjects catered to meet the diverse interests and aspirations of our learners. The subject choice grid below outlines the choices available – you are required to select three subjects from different columns. There is an opportunity to retake GCSE English Language or GCSE Maths (if applicable).

## A LEVEL SUBJECT CHOICE GRID

A Level Columns	A	B	C	D
Sciences	Maths		Biology	
Humanities	Film Studies	English Literature	English Language	Media Studies
Social Sciences	History	Sociology		Psychology
Business and Law		Business	Law	

## DRAFT TIMETABLE

	Monday	Tuesday	Wednesday	Thursday	Friday
9:00am – 10:30am	D	A	A	D	GCSE-IGCSE
10:45am – 12:15pm	D	A	A	D	GCSE-IGCSE
1:15pm – 2:45pm	C	B	C	B	–
3:00pm – 4:30pm	C	B	C	B	–

# ENTRY CRITERIA

All learners require five GCSE grades 9-5 to study A Levels with the following additional grades needed for specific subjects:

## BUSINESS

Grade 6 in GCSE Maths.

## BIOLOGY

Grade 6 in GCSE Maths or Science, and English Literature or Language.

## PSYCHOLOGY

Grade 6 in GCSE English Literature or Language, and Maths.

## MATHS

Grade 6 in GCSE Maths.

## ENGLISH LITERATURE AND ENGLISH LANGUAGE

Grade 6 in GCSE English Language, English Literature or a Humanities subject.

We may consider accepting learners with different grade profiles e.g. international qualifications on a case-by-case basis.

# HOW TO APPLY

## 1. SUBMIT APPLICATION FORM

To apply for a course, simply submit an application form.

Apply online at [www.boston.ac.uk](http://www.boston.ac.uk)

Your application will be processed by the Admissions Team.

## 2. APPLICATION REVIEW

After your application has been received and processed, you will have an 'Application Review' with a member of staff from the A Levels Department. The Application Review is a great way of getting to know the College and will give you the chance to discuss the course in more detail.

## 3. YOUR PLACE

Following your Application Review, you will be sent a letter stating one of the following:

A conditional offer

Offer of a guidance session

## 4. STUDENT INDUCTION DAY

Your Induction Day in June is the final stage of your application before enrolment in August. This is your opportunity to meet your course tutor and other members of the College staff, take part in activities, familiarise yourself with the College campus and get to know other learners on your course.

## 5. ENROLMENT

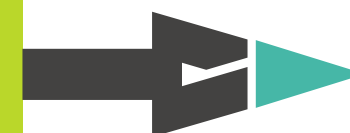
Once you have accepted your course offer, you will receive a letter in August inviting you to enrol on a certain date and time. It will provide you with all the information you need to be able to enrol at the College. Enrolment usually takes place at the end of August onwards, with the overall process taking around two hours. Once enrolment has been completed and you have your ID badge, you are an official Boston College learner!



# OPEN EVENTS

At our Open Events you can explore our facilities, speak to industry expert lecturers, meet current learners, find out all you need to know about the courses you are interested in, apply on the night and talk to our Learner Services Team for anything from impartial careers advice to finance support.

OUR OPEN EVENTS REALLY ARE THE BEST WAY TO DO IT ALL!



Register your place on our website using the QR code or at

[www.boston.ac.uk/open-events](http://www.boston.ac.uk/open-events)



### BOSTON

Thursday	Thursday	Thursday	Thursday
12th October 2023	16th November 2023	1st February 2024	25th April 2024
5:00pm – 8:00pm	5:00pm – 8:00pm	5:00pm – 8:00pm	5:00pm – 7:00pm

This course guide can be made available in the following formats: electronically, large font or audio guide. Please enquire by calling **01205 313218** or email [info@boston.ac.uk](mailto:info@boston.ac.uk). Boston College is committed to equal opportunities and positively welcomes applications from individuals irrespective of racial origin, age, gender, sexual orientation, religious faith or disability. All information in this course guide is believed to be correct at the time of printing, but is subject to change at any time. Images used in this course guide are for illustrative purposes only.



**BRILLIANT TODAY, BETTER TOMORROW**

**boston:college**

01205 313218  
info@boston.ac.uk  
www.boston.ac.uk



@bostoncollegeuk



@bostoncollege.uk



This course guide is printed by a certified carbon-neutral supplier on paper certified by the Forest Stewardship Council (FSC), using vegetable-based printing inks.

**BOSTON COLLEGE, SKIRBECK ROAD, BOSTON, LINCOLNSHIRE PE21 6JF**